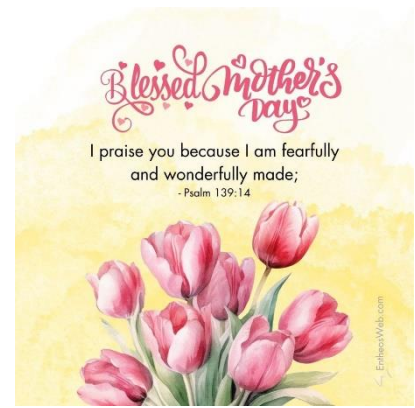


BALLINAMALLARD & TRILICK METHODIST CHURCH



Announcements - week beginning 29th March 2026

Sunday 29th March 2026

- 10.15 am Trillick Morning Service – Rev John Beacom
11.30 am Ballinamallard Morning Service – Rev John Beacom
Led by Sunday School
11.45 am Creche

Monday 30th March 2026

- 8.00 pm Historical Society - Catherine Scott will do a presentation on the Lough Erne Pilgrim Way and early Christian Sites of Fermanagh.

Tuesday 31st March 2026

- 2.30 pm Craft Class in MWI Room

Wednesday 1st April 2026

- 9.30 – 11 am Kids Café in Ember
7.00 pm Circuit Choir in the Church

Thursday 2nd April 2026

- 8.00 pm Maundy Thursday Communion Service in Ballinamallard

Friday 3rd April 2026

- 8.00 pm Good Friday Service in Trillick Church

Sunday 5th April 2026

- 6.30 am Sunrise Service in Necarne Estate
10.15 am Trillick Easter Praise
11.30 am Ballinamallard Easter Praise
11.45 am Creche
7.00 pm Easter Praise Service

KIDS CAFÉ

Parents -
We've got you!



We're adding a comfy kids
play mat & toy area in the
cafe so you can:

- Drink your coffee while it's still hot
- Let little ones play safely nearby
- Actually finish a conversation



Every Wednesday
9.30 - 11am
Starting 11th March



ember

METHODIST - EXPERIENCE - EXCHANGE - TELL

Experience the vibrant life and ministry of the Methodist Church in The Gambia, witnessing first-hand how God's people are growing His church and reaching out to their Muslim neighbours. You'll visit schools, clinics, and an agricultural project - all vital parts of Methodist ministry in the region. Just as important, you'll share in worship, Bible study, and outreach with your Gambian brothers and sisters. This visit offers a unique opportunity to learn from and be inspired by God's work in another place, while building lasting relationships with our world church family.

Where: The Gambia

When: Provisionally 24th October – 1st November 2026 (Final dates to be confirmed)

Who: 8-10 people, led by Rev Dr Laurence Graham (WMP General Secretary) and Ruth Wilson (former Mission Partner in The Gambia). **Initially, applications are limited to those living in the Fermanagh-South Tyrone area, and the Dublin area.**

Cost: Personal contribution of £1,000 (€1,1,50), plus further fundraising as a group. (Bursaries may be available for those on low incomes)

Age: 18+

MEET 2026

THE GAMBIA

METHODIST - EXPERIENCE - EXCHANGE - TELL



IRISH METHODIST
WORLD MISSION
PARTNERSHIP

Experience the vibrant life and ministry of the Methodist Church in The Gambia, witnessing first-hand how God's people are growing His church and reaching out to their Muslim neighbours.

- Visit schools, clinics and an agricultural project
- Share in worship, bible study and outreach with local Christians
- Learn and be inspired by God's work in The Gambia
- Build lasting relationships with our world church family
- Provisional dates 24th October - 1st November

Email: worldmission@irishmethodist.org

Wesley Pilgrimage

Tuesday 30 June – Sunday 5 July 2026

Travel: by boat (Dublin – Holyhead) and coach

Accommodation: Cliff College (Peak District), Travelodge (Bath, Windsor) and Premier Inn (Lichfield)

Guide: Dr Stephen Skuce

Leaders: Gillian Kingston (Tipperary), Rev Andrew Kingston (Dublin)

This pilgrimage will involve guided walking tours in Epworth Old Rectory, Oxford, Bristol, London, and more – exploring the places that shaped John and Charles Wesley and the Methodist movement. Along the way, you'll grow in spiritual formation, connect with the roots of our Wesleyan faith, and share in community.

Cost: €850 (single supplement + €115). Concessions available if required. Deposit of €100 secures.

For a booking form and full itinerary email
andrew.kingston@irishmethodist.org

40 places, closing date for bookings, 15 May 2026



"Do all the good you can, by all the means you can, in all the ways you can, in all the places you can, at all times you can, to all the people you can, as long as ever you can"

John Wesley, 1747



CONTAINER MINISTRY

Sierra Leone, Latvia & The Gambia appeal



IRISH METHODIST
WORLD MISSION

PARTNERSHIP (CONTAINER MINISTRY)

Container Ministry 2026 Appeal

William and his team have a challenge on their hands. They are starting to prepare three shipping containers, hoping to fill them with much-needed items requested by our Methodist brothers and sisters in Sierra Leone, Latvia and The Gambia. It is a long list with a wide variety of items, so we are reaching out to Methodists across Ireland for help.

Below is a letter from William Carson

“In response to three separate requests for assistance in Autumn 2025, there are three empty 20ft containers at the warehouse – and we’re asking for your help to fill them. Methodists may not be a large denomination (numerically), but we are known to have a Heart for Mission. This has been proven by the support we have received over the last thirty-six years. Please do not feel pressured, but after reading the list below, you may become aware of surplus equipment or items in your workplace, school, home, family, etc., that are no longer in use and could be donated.

The requests are from three Methodist Connexions in three very different countries, yet many of them are similar. We appreciate that this is a long and varied list. Still, we’re asking for your prayerful support for the task ahead, and we will

gratefully accept any practical or financial support that any Society, organisation or individual can offer.

On behalf of our team of volunteers, thank you again for your continuing interest, practical and prayer support over many years.”

William Carson

We have a challenge on our hands. In response to three separate requests for assistance in Autumn 2025, there are three empty 20ft containers at the warehouse – and we’re asking for your help to fill them. Methodists may not be a large denomination (numerically), but we are known to have a Heart for Mission. This has been proven by the support we have received over the last thirty-six years. Please do not feel pressured, but after reading the list below, you may become aware of surplus equipment or items in your workplace, school, home, family, etc., that are no longer in use and could be donated.

The requests below are from three Methodist Connexions in three very different countries, but many of

their requests are similar. We appreciate that this is a long and varied list, but we’re asking for your

prayerful support for the task ahead, and we will gratefully accept any practical or financial support that any Society, organisation or individual can offer.

Over the autumn, we received a request for assistance from **Sierra Leone**. In 2024, we undertook to supply equipment and supplies to support the establishment of a multi-purpose training centre, which will enable young people from rural areas to be trained in....Information Technology, Sewing, Joinery, Bricklaying, Agriculture and Horticulture. This is the third of three containers which will complete the project.

Latvia has two ongoing projects, “Wesley Camp” (a youth summer camp and retreat centre) and “The Hope Centre” (a support facility providing a safe Christian haven and social rehabilitation for young mothers and babies).

The third container will provide practical assistance for Methodist Church Development programmes in **The Gambia**.

<u>EDUCATION</u>	<u>BEDDING</u>
Stacking tables and chairs for primary pupils, Nursery School toys, floor mats, and teaching aids, Stationary—geometry sets, exercise books,	Single bed fitted and flat sheets, Pillowcases, Sleeping bags (all sizes), Sleeping bag liners, Single duvets and covers.

drawing paper, coloured pencils and crayons, plasticine, pencil sharpeners, Sellotape, refill pads, educational wall charts, etc. White boards, Playground materials and toys, Primary School library books, Arts and crafts supplies - coloured paper and card, paints, brushes, safety scissors, coloured wools, and threads	<u>KITCHENWARE</u> Medium and large saucepans, frying pans, Casserole and stew pots, Pressure cookers, Large cups, mugs, soup bowls and plates, Kitchen utensils and cutlery and trays.
---	---

DRESSMAKING ACCESSORIES

- Sewing machines (electric and manual),
- Dressmaker's tape,
- Buttons, zips, pins,
- Scissors, pinking scissors, seam strippers,
- Needles, sewing machine needles,
- Dressmaking patterns,
- Thread, belts,
- Light cotton material (min. 1mtr x 1mtr),
- Sewing kits, tailor's chalk,
- Plus, other essentials that a man like me wouldn't think of!

Nursery Equipment

- Bedding
- Cots
- Prams
- Non Battery Powered Nursery Toys
- Childrens Bikes
- Ride on Toys (indoor and outdoor)

Children aged 4-16

- Flip Flops (new)
- Baseball caps
- Balls (all sizes)
- Bean Bags
- Colouring in Books (new)

Clothing/Footwear

- Infant – adult (new or used in good condition)
- We must be extra careful, customs are very strict with quality but there is still a need.

Toiletries

- Face and bath towels
- Toothpaste, tooth brushes
- Baby Wipes
- Soap
- Sudocream
- Sponges
- Deodorant
- Safety Razors / shaving cream / foam
- Sanitary items etc

Agriculture

- Tractor (MF35 or equivalent HP)
- Two Furrow plough
- Five foot tiller
- Pin harrow
- Link Box

MEDICAL

- Wheelchairs, rollators,
- Dressings and bandages,
- Adult and child's weighing scales,
- Dental chair and associated dental equipment.

WORSHIP

- Keyboards,
- Guitars, violins,
- Choir robes,
- Drum kits, tambourines,
- Portable PA systems, mic stands,
- Theological books etc.

MISCELLANEOUS ITEMS:

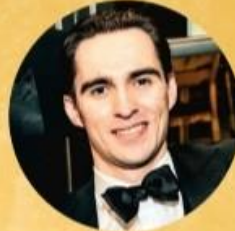
- Under-counter fridges and freezer, or combined fridge/freezers
- 8" grinders
- Office Chairs
- School physics and chemistry equipment and supplies
- Gazebos, or marquee (for approx. 30 people)
- Ridge and family camping tents complete (min 3 person)
- Laptops and pcs (min Windows vista or 7)
- Generators (Various sizes 2-10kv)
- Folding tables and stacking chairs (similar to those used in churches)
- Gardon tools (good condition)
- Heavy-duty garden furniture (chairs, benches, picnic tables etc)

On behalf of our team of volunteers, thank you again for your continuing interest, practical and prayer support over many years. Please contact me any additional information is required. William Tel.+44 38342422 / 07706264180
e mail: mms.ireland@btconnect.com / wcarsonmms@aol.com

"Collectively, when we do our best, the Lord will do the rest," that is a Faith Ministry, and it works.

COUNTRY MUSIC EVENING

WEDNESDAY 22 APRIL 2026 8 PM
KILLYHEVLIN HOTEL



Comperer: Malcolm McDowell
Backing Music: Robert Pearson

Featuring
Conor Chism, Jason Irwin
Conor Owens, Alastair Spence



Proceeds in aid of Rossorry Parish Building Fund

Tickets £12 available from:

Killyhevlin Hotel 02866 323481

SD Kells Shop, Enniskillen

Rossorry Parish Office 02866 329889

Any member of the parish

(Mornings only)